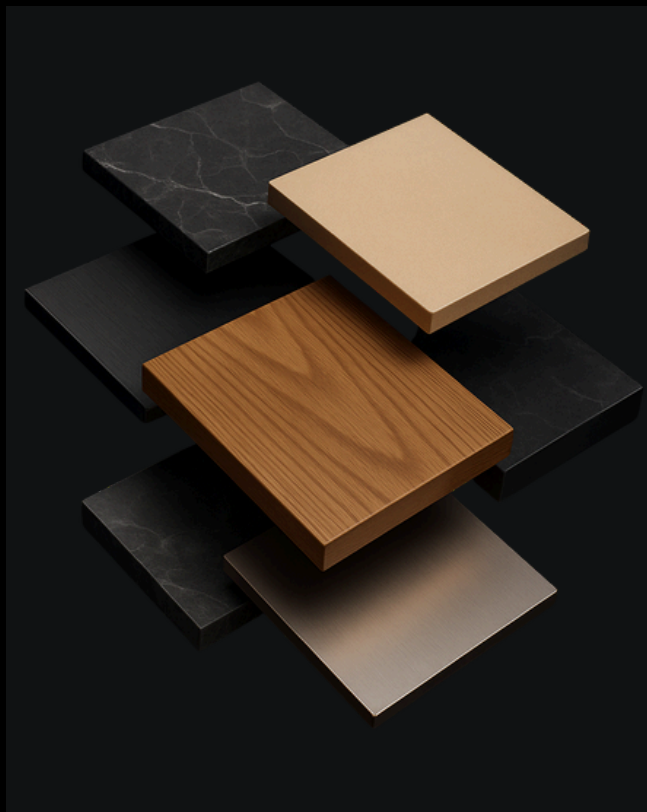


PRODUCT CATALOG



AFTON GLOBAL SUPPLY
DESIGN X MANUFACTURING SIMPLIFIED

AFTON GLOBAL SUPPLY

Design x Manufacturing Simplified

ABOUT US

Afton Global Supply connects global manufacturing with inspired design.

We partner with architects, developers, and builders across hospitality, commercial, and residential projects to source high-quality, customizable materials and furnishings. From wall panels and flooring to cabinetry, furniture, and modular units, our team manages every stage — design coordination, factory production, packaging, and delivery — with precision and transparency.

By combining design-stage collaboration with direct manufacturing control, we help clients achieve smarter aesthetics, faster installations, and measurable cost efficiency on every project.

Headquartered in Houston, we operate globally and locally, supporting projects from early design to final installation — wherever quality and design converge.



FROM CONCEPT TO REALITY

Transforming a 12-story hospitality vision into reality required close coordination from early design through delivery.

Afton Global Supply collaborated directly with the project's architects to refine finishes and assembly details — simplifying installation and reducing labor time while maintaining the design intent.



By integrating materials sourcing, manufacturing and logistics under one workflow, the project achieved faster execution and a more cohesive result.

The project's scope included wall panels, flooring, lighted mirrors, custom furniture and fixtures, bed frames, nightstands, seating and linens.

PROJECT HIGHLIGHTS

- » Optimized design and pre-assembly reduced on-site labor by over 30%.
- » All components arrived pre-packaged and labeled for installation, ensuring consistent quality and minimal waste.
- » Factory-direct sourcing and logistics coordination saved the client 35% in total project cost.
- » Demonstrated the value of collaboration between Afton, architects and manufacturers during the design stage.

CONTENTS

EXTERIOR FINISHES

CORRUGATED ROOFING	2
STONE COATED ROOFING TILES	3
EXTERIOR PWC PANELING	4
COMPOSITE DECKING	5
WPC FENCING	6
STEEL PRODUCTS	7-8

INTERIOR FINISHES

WPC WALL PANELING	10-11
BAMBOO VANEER PANELS	12
PVC MARBLE SHEETS	13
PU STONE GEOMETRY PANELS	14
CABINETRY	15

WOOD & LAMINATE FLOORING

SPC FLOORING	16
LVT FLOORING	17-18

WINDOWS & DOORS

ALUMINUM WINDOWS	20
EXTERIOR DOORS	21
INTERIOR DOORS	22

BATHROOM HARDWARE

FIXTURES	24
SMART TOILETS	25

PODVOYAGER

MODULAR CAPSULE LIVING	27-30
------------------------	-------

EXTERIOR FINISHES



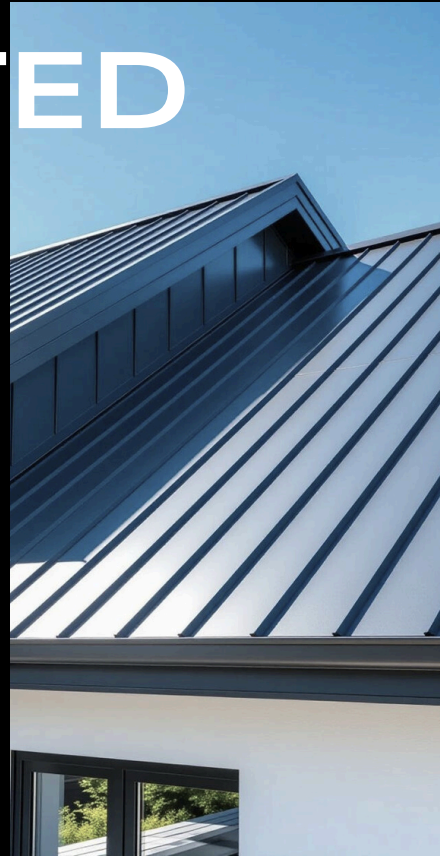
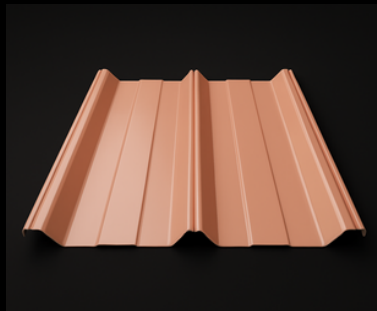
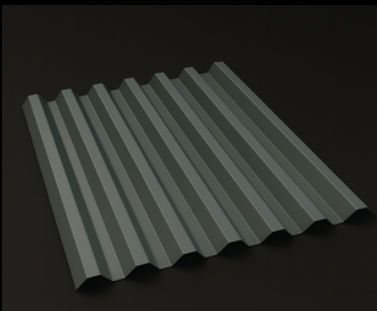
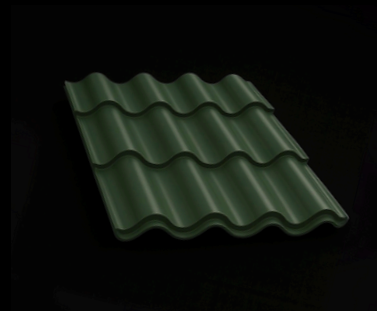
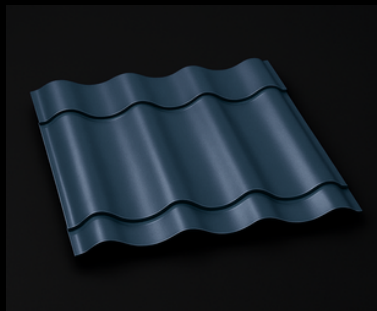
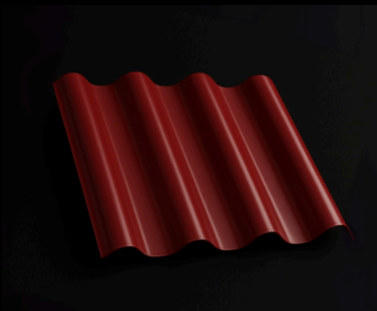
CORRUGATED ROOFING

Our corrugated roofing sheets span across every material, shape, size and color. Mix and match to your needs, then select a ridge cap style to complete your project.

RIDGE CAPS



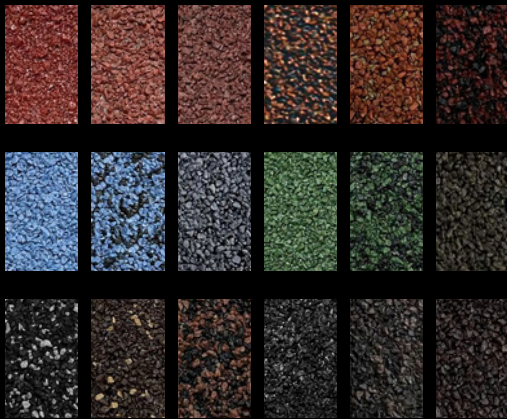
CHOOSE YOUR STYLE



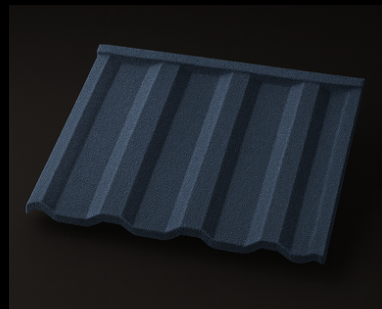
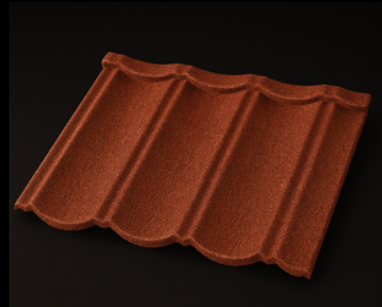
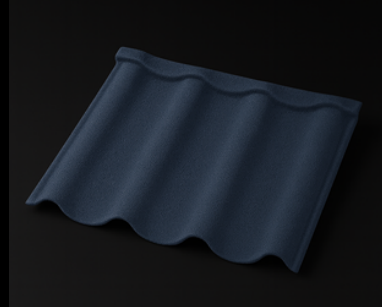
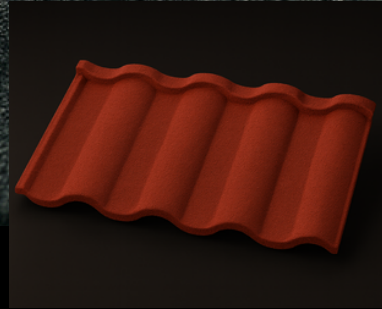
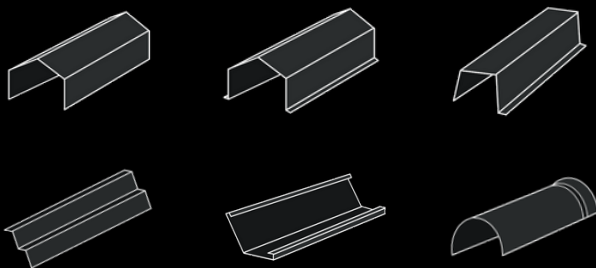
STONE COATED ROOFING TILES

Select your style of stone-coated roofing tiles, from shape to color, you can create exactly the roof you want.

COLORS



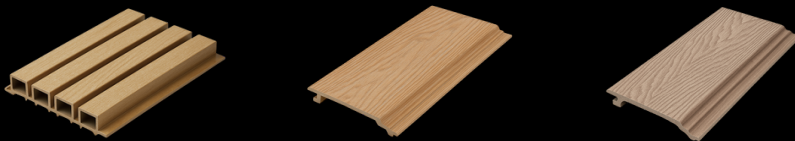
RIDGE CAPS



EXTERIOR PANELS

WPC PANELS

Our third-generation outdoor wood-plastic decking is 40% lighter, built with a PVC core and ASA co-extrusion layer for exceptional durability, weather resistance, and long-lasting color —fading less than 5% in 15 years.



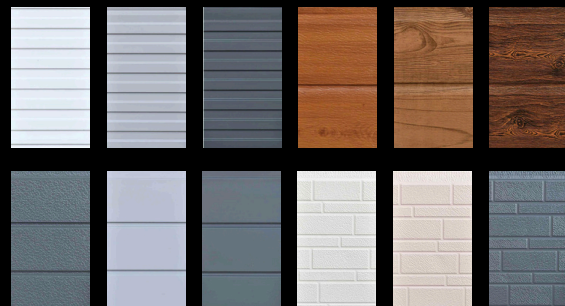
TEXTURES



METAL PANELS

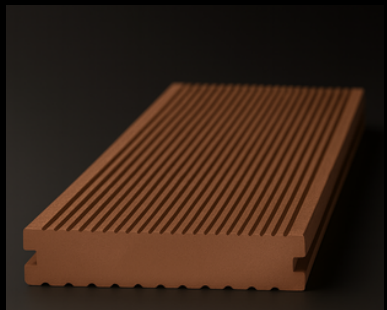
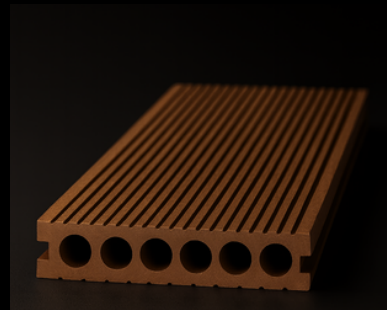
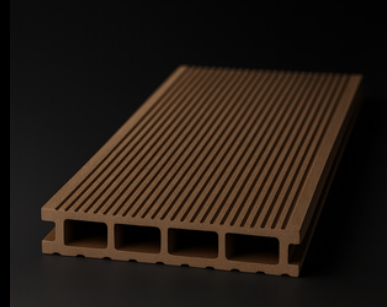


Each metal panel features precision-cut patterns and a sleek, modern finish. Built for durability, these panels resist weathering, fading, and corrosion, making them perfect for both residential and commercial projects.



COMPOSITE DECKING

WPC co-extrusion decking has a highly weather-resistant PE co-extruded layer coating, including a PE core layer and a PE co-extruded layer. It has strong outdoor weather resistance, will not absorb water or oil, has strong oil resistance, is mildew-proof, and white-soft-proof. It has rich color, resists fading, and has a long service life.



TEXTURES



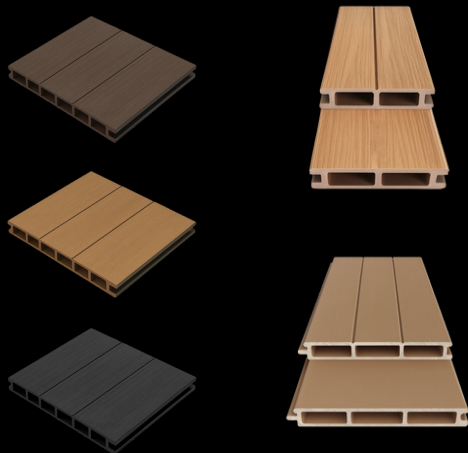


WPC FENCING

Upgrade outdoor spaces with sleek, durable WPC fence panels. Featuring a natural wood grain finish and low-maintenance design, they resist fading and weathering for long-lasting style and privacy.



COLORS

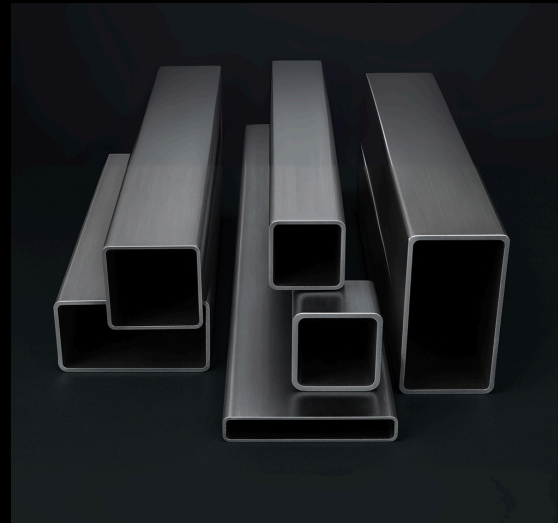


STEEL PRODUCTS

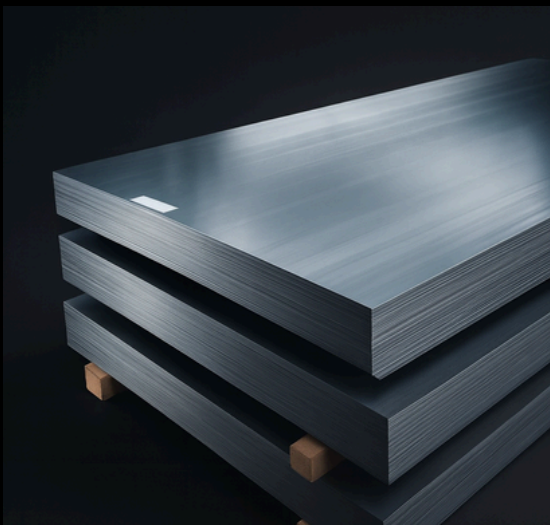
Built from high-grade, corrosion-resistant steel, these products combine strength, sleek finishes, and dependable quality. Designed for versatility and long-lasting performance, they bring a polished, modern look to any project.



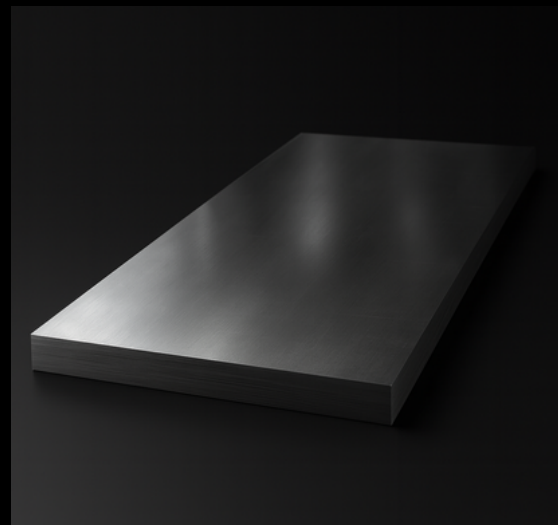
ERW PIPE



**SQUARE/RECTANGLE
HOLLOW SECTION**

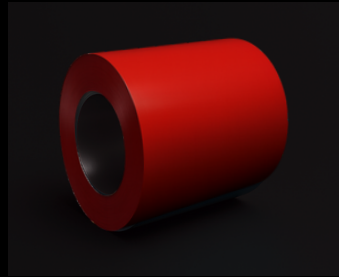


**HOT-ROLLED
STEEL PLATE**

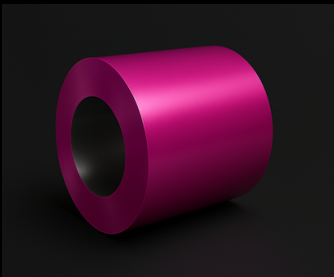


**COLD-ROLLED
STEEL PLATE**

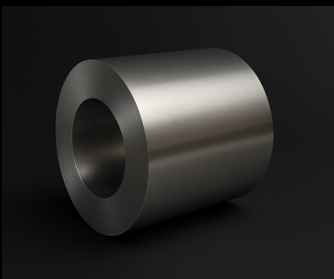
STEEL COILS



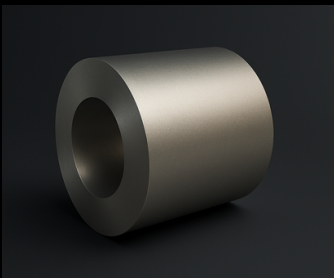
PPGI/PPGL
STEEL COILS



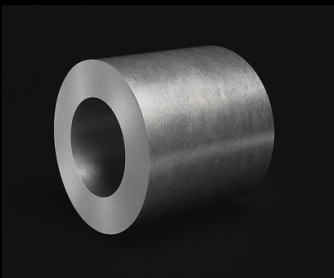
COLORED
ALUMINIUM
COILS



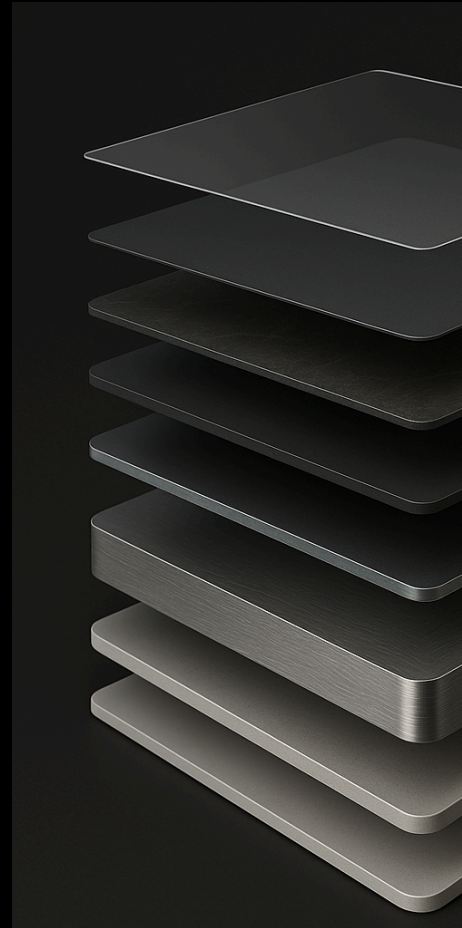
HOT DIPPED
GALVANIZED
COILS



ALUMINIUM
COILS



GALVALUME
& ALUZINC
COILS

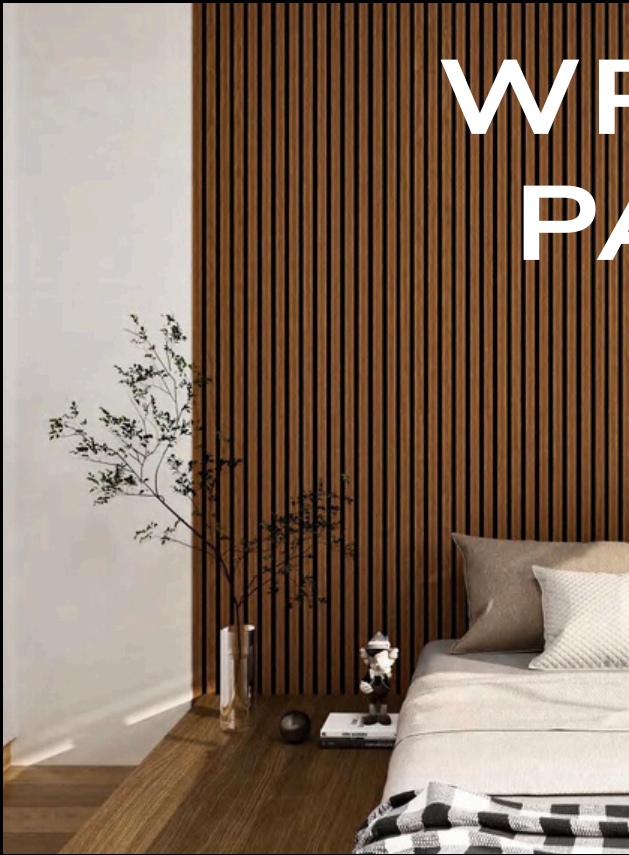


DURABLE MULTI-LAYER DESIGN

Premium 8-layer coated steel sheet with removable protective film, vivid surface coats, dual chromizing barriers, a high-strength steel core, and a sealed back coat. Built for corrosion resistance, scratch protection, UV-stable color, and clean formability for manufacturing.

INTERIOR FINISHES





WPC WALL PANELING

The WPC Wall Panel is a stylish and durable wall covering crafted from premium wood-plastic composite material. Its sleek design and distinctive profile make it an ideal choice for adding modern elegance to any space.

COLORS



TEXTURES



WPC CEILING PANELS

Ecological wood ceiling is a sustainable wood-plastic composite made of resin, wood fibers, and polymers. It offers the look and stability of solid wood while being waterproof, anti-corrosive, and insulating. Added UV and impact resistance enhance its durability and weather protection.



ACCESSORIES

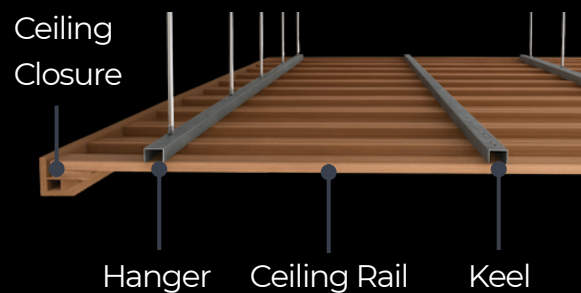


Keel

Hanger

Shutters

ASSEMBLY



WOOD VANEER PANELING

Bamboo Charcoal Wood Veneer is made of polyvinyl chloride resin, combined with wood powder and special additives, then extruded. It is a waterproof, lightweight, expanded rigid plastic board suitable for various applications, including kitchen and bathroom cabinets, interior decoration, booths, advertising signs and displays, prototypes, and more.



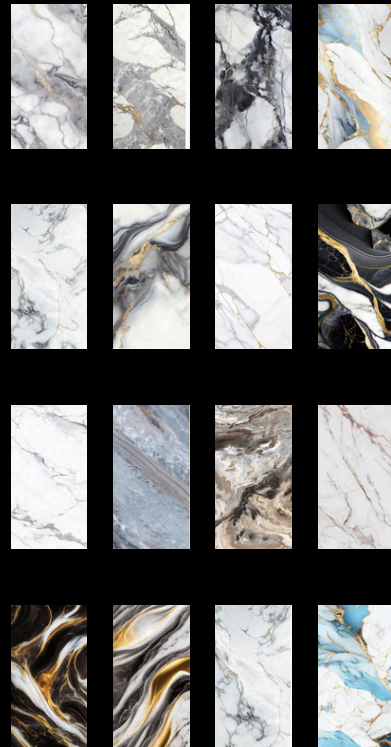
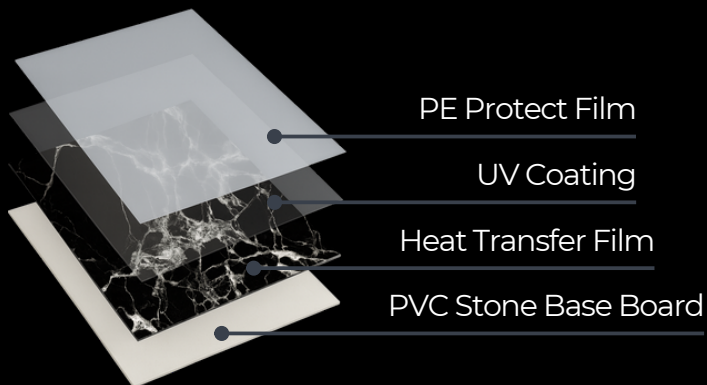
Due to its high workability, Bamboo Charcoal Wood Veneer can be easily processed by sawing, CNC cutting, printing, sanding, routing, painting, laminating, and other methods.





MARBLE WALL PANELING

PVC Marble Sheet is a lightweight, cost-effective wall panel made from high-quality PVC and additives. It's waterproof, fire-resistant, and radiation-free, with a realistic marble finish that adds elegance to interiors—making it an ideal choice for modern wall cladding.

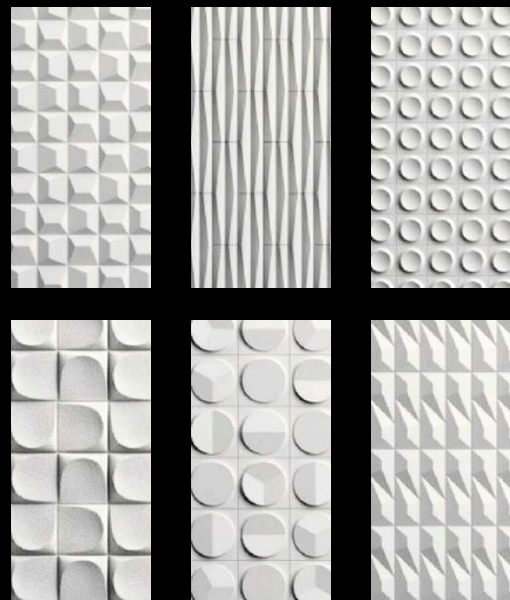


STONE WALL PANELING

Pu Stone refers to polyurethane stone, also known as artificial rock. It is an artificial stone made from materials such as polyurethane resin, fillers, and pigments through a series of processes.

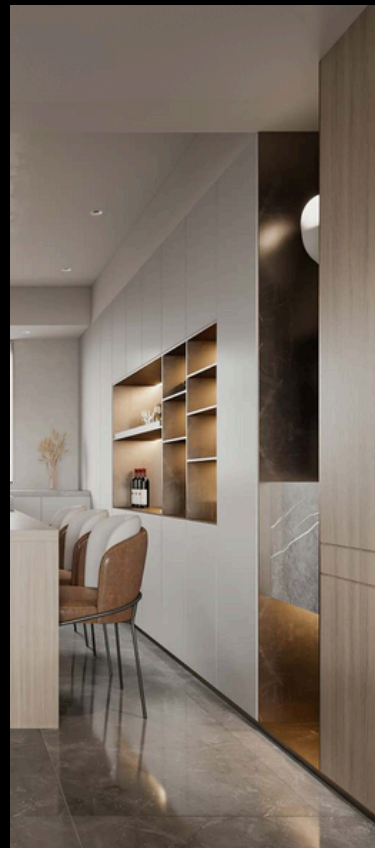


GEOMETRY SERIES



CABINETS

Explore our precision-engineered custom cabinetry designed for both residential and commercial spaces. Each piece is crafted to order, combining premium materials, modern functionality, and tailored finishes that reflect the client's aesthetic and architectural vision.



WOOD & LAMINATE FLOORING



SPC & LVT FLOORING

Modern flooring materials like SPC (Stone Plastic Composite) and LVT (Luxury Vinyl Tile) combine the aesthetics of wood or stone with superior durability and low maintenance. Compared to traditional wood flooring, they offer better water resistance, easier installation, and long-term stability.

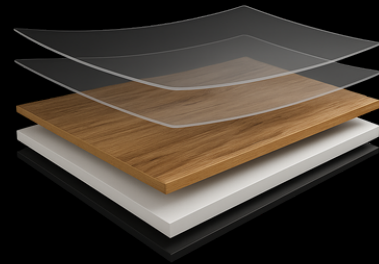


PERFORMANCE COMPARISON

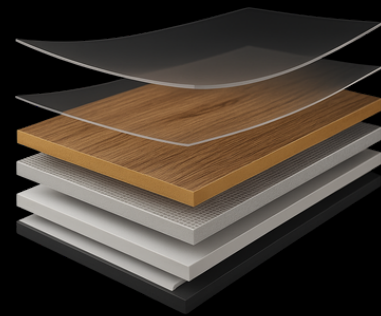
CATEGORY	SPC	LVT	WOOD
WATERPROOF	✓	✓	✗
FIRE RESISTANT	✓	✓	✗
TEMPERATURE	Excellent	Moderate	Poor
SCRATCH RESISTANCE	High	Medium	Low
MAINTENANCE	Easy — mop & wipe	Easy — mop & wipe	Requires polishing/ refinishing
SOUND ABSORPTION	Good (with underlay)	Better natural absorption	Moderate
DIY INSTALLATION	Easy	Easy to moderate	Professional only
ECO-FRIENDLINESS	Low-moderate	Moderate	High



SPC



LVT



SPC delivers exceptional durability, stability, and waterproof protection—ideal for busy or moisture-prone spaces. LVT offers a softer feel, flexible installation, and realistic visuals that bring the look of wood without the maintenance or cost.

STRUCTURAL COMPARISON

FEATURE	SPC	LVT	WOOD
CORE MATERIAL	Stone-plastic	PVC & fiberglass	Solid or eng. wood
CONSTRUCTION LAYERS	UV Coating → Wear Layer → Decor Film → SPC Core → Bottom Layer	UV Coating → Wear Layer → PVC Decor → Fiberglass → Base Layer	Wood veneer layers (engineered) or solid timber
THICKNESS RANGE	3.5 – 7.0 mm	1.5 – 6.0 mm	12 – 20 mm
INSTALLATION	Click-lock system	Click-lock / Loose Lay / Glue-down	Nail-down or glue-down
COMFORT	Firm feel, stable	Softer, warmer feel	Natural warmth
SURFACE FINISH	Embossed wood or stone textures	Embossed realistic textures	Natural grain

SPC & LVT



WINDOWS & DOORS



WINDOWS

Casement | Sliding | Fixed | Tilt-Turn



Afton's window systems are engineered for precision, design flexibility, and durability. Each system can be tailored for performance — from coastal wind loads to ultra-quiet urban environments — making them ideal for contemporary U.S. residential and commercial projects.



ARCHITECTURAL EDGE

- Ultra-slim profiles maximize daylight and create a clean, modern aesthetic.
- Provides superior acoustic isolation and thermal comfort for energy efficiency.
- Smart-lock and automation compatibility available on select models.
- Hardware U.S. or German premium systems, concealed hinges, precision handles.
- Operation Casement, tilt-turn, fixed, or sliding.
- Finishes Powder-coated or anodized, full RAL range.

EXTERIOR DOORS

Lift-Slide | Multi-Track | Bi-Fold



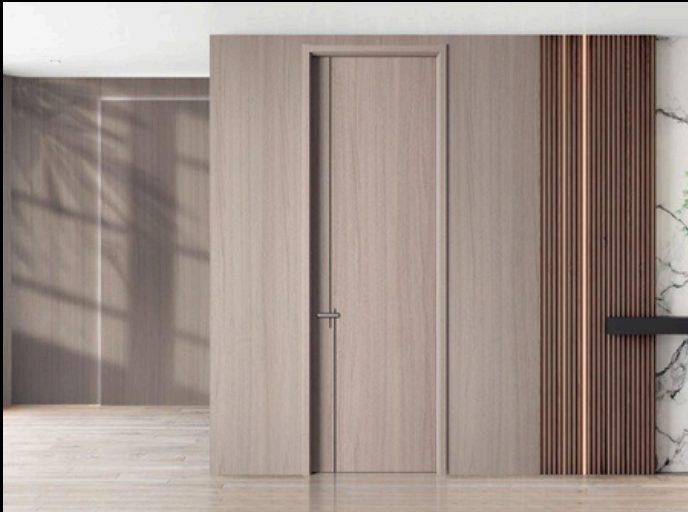
Afton's large-format glass door systems are built to merge aesthetics with performance. Whether framing a panoramic view or opening a wall completely, these doors deliver smooth operation, superior insulation, and architectural precision tailored for U.S. residential and commercial applications.

SPECIFICATIONS

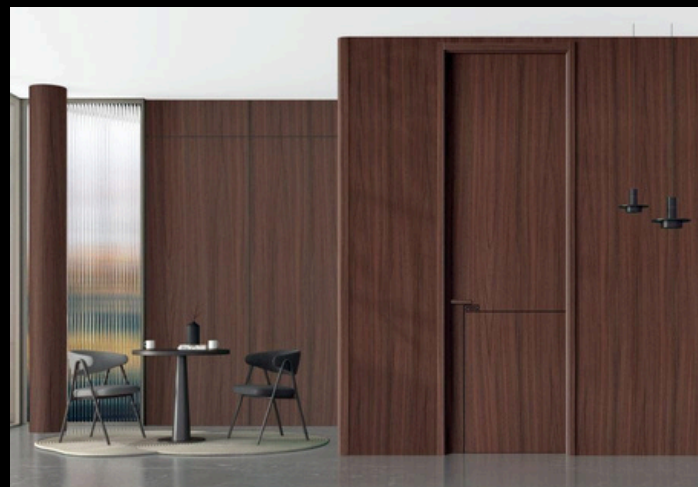
- Profiles Thermally broken aluminum (2.0 mm typical)
- Glazing Double / Triple Low-E or laminated (40 mm)
- Hardware U.S. or German premium rollers and locks
- Operation Multi-track sliding, lift-slide, or folding panels
- Threshold Flush entry, integrated drainage option
- Finishes Custom powder-coated / anodized
- Applications Villas, hospitality, retail, and terraces



INTERIOR DOORS



Afton is a trusted provider of high-quality interior doors that combine durability, style, and precision craftsmanship. Each door is built from premium materials—such as solid wood, solid-core engineered wood, or composite veneers—and constructed with care to ensure smooth operation, superior sound insulation, and long-lasting performance. Whether you're going for a classic paneled look or a sleek modern flush design, you'll find a solution that elevates your space.





BATHROOM HARDWARE



BATHROOM HARDWARE

Elevate your bathroom with sleek, modern hardware designed for both luxury and function. With durable finishes, minimalist style, and precision controls, each piece delivers a spa-like experience while elevating your space.



SMART TOILETS

Smart toilets boost hygiene, comfort, and efficiency with bidets, self-cleaning, heated seats, and water-saving flushes—cutting paper use and enhancing convenience.



PODVOYAGER

PODVOYAGER

PODVOYAGER

Sustainable Luxury Capsule Living

Afton is proud to partner with PodVoyager, a leader in prefabricated capsule homes that combines modern design, sustainability, and comfort. Together, we bring innovative living solutions tailored for resorts, retreats, and unique hospitality experiences.

ABOUT PODVOYAGER

PodVoyager's fourth-generation capsule houses are built to maximize space, durability, and style. Each pod is:

- Space-Optimized – smart layouts that feel open and functional.
- Customizable – adjustable designs to match your budget and vision.
- Eco-Friendly – durable materials & energy-efficient builds with a minimal footprint.





PODVOYAGER

Experience a new standard of portable living with sleek, eco-friendly capsule houses. Designed for comfort, sustainability, and simple installation, these versatile units are ideal for resorts, glamping sites, and off-grid retreats. Built to withstand diverse climates, they combine durability with minimal environmental impact, offering customizable layouts and energy-efficient features for a premium, low-maintenance living solution.



PODVOYAGER SPACES


YOUR CAPSULE, YOUR WORLD

PodVoyager capsules redefine flexible living and working. Beyond luxury glamping, each capsule can be transformed into an office, café, boutique, wellness studio, or any space you need.

With premium finishes, energy-efficient systems, and rapid setup, these capsules fit anywhere—from remote retreats to urban hubs.



PODVOYAGER IN CONSTRUCTION

A white, modern, modular PodVoyager capsule is parked on a construction site. The capsule has large windows showing a comfortable interior with a sofa and a chair. A door on the side is labeled '88-X'. In the foreground, two construction workers wearing hard hats and safety vests are looking at a set of blueprints. The background shows a building under construction with scaffolding and a crane.

PodVoyager capsules provide instant, modern spaces for construction sites—whether used as site offices, meeting rooms, break areas, or temporary housing. Their modular design allows rapid deployment, while premium insulation and durable finishes ensure comfort and reliability in tough environments.

From short-term projects to long-term builds, PodVoyager delivers professional, ready-to-use spaces that keep your teams productive and connected.

PODVOYAGER



AFTON

AFTONSOL.COM